

Mobile crushing plant Lokotrack LT106





Lokotrack LT106 Groundbreaking Excellence

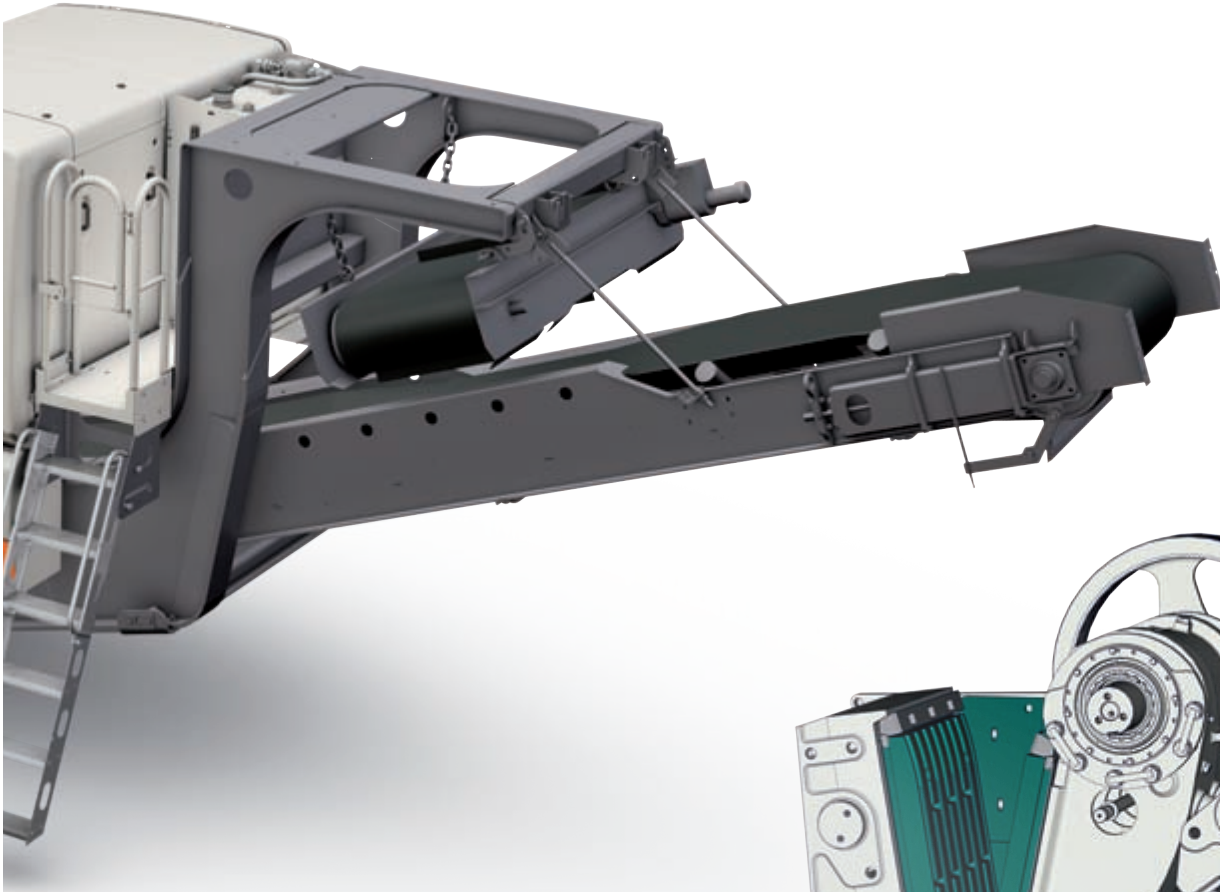
The improved successor to the industry benchmark in mobile crushing takes production capacity to a whole new level, while simultaneously cutting operating costs and generating the highest customer value possible. By combining over 25 years of experience in mobile equipment with 21st century materials and design, the LT106 takes a giant leap forward in the mobile crushing industry.

New generation of proven performance

The Lokotrack LT106 is built around the world-renowned C106 jaw crusher, with a proven track record in the toughest of applications. New features, such as a radial side conveyor, high inertia flywheels and an IC700 automation system that utilizes an ultrasonic material level sensor, offer the best capacity and cost efficiency in the 40-ton size class. The totally new fuel-efficient CAT9.3 Tier 4 engine with hydraulic drive ensures trouble-free operation and enables the direction of the crusher to be changed in the event of a blockage.

Setting standards in mobility

The Lokotrack LT106's compact dimensions and agility on tracks mean lower transport costs between and within crushing sites. The chassis design, with good clearance on both ends, enables safe and easy loading onto a trailer. Thanks to the feed hopper sides, with a patented and safe hydraulic securing system and radial side conveyor, the unit is ready for crushing or transport within minutes.

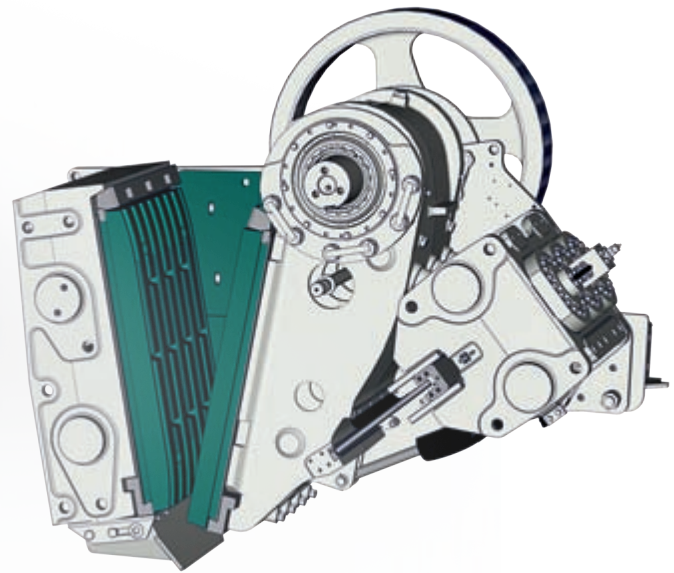


Safe and easy to operate

New design features, such as engine and flywheel composite covers, together with spacious service platforms and general excellent accessibility make daily operations safe and easy.

Flexible and fuel-efficient solution for the value-driven customer

Active setting control, screen module, Metso hammer and a wide range of other options give the Lokotrack LT106 unmatched process flexibility and the capability to work in the most demanding aggregate and recycling processes. A new hydraulic system, coupled with an environmentally friendly, low-emission Caterpillar C9.3 Tier 4 or C9 Tier 3 engine and high inertia flywheels, offers excellent fuel efficiency of 17–22 liters per hour on average without compromising process flexibility, safety and the durability of the hydraulic drive.



Active Setting Control is available for Lokotrack LT106.

Lokotrack LT106:

- Proven C106 crusher with new features offers higher capacity and lower operational costs
- Compact and agile to transport
- Availability and productivity maximized through high-quality components and process automation
- 21st century design for safe and easy operation and maintenance





- 1 Composite material increases accessibility and enables easy and safe service.
- 2 Radial side conveyor can be turned to either side, thereby increasing process flexibility.
- 3 Feed hopper sides and locking mechanism are hydraulically operated.
- 4 Compact dimensions make LT106 easily transportable on trailer. The unit pictured is equipped with an optional screen module.

Basic dimensions LT106

C106 jaw crusher			
Feed opening	1060 x 700 mm	42 x 28"	
Feed hopper			
Standard	6 m ³	8 yd ³	
With extensions	9 m ³	12 yd ³	
Loading height	3.9 m	12' 10"	
Feeder			
Width	1100 mm	3' 7"	
Length	4150 mm	13' 8"	
Main conveyor			
Width	1000 mm	39"	
Discharge height (standard)	2800 mm	9' 7"	
Discharge height (optional)	3900 mm	12' 9"	
Engine			
Caterpillar C9.3	224 kW (1800 rpm)	300 hp	
Transport dimensions			
Length	15200 mm	49' 9"	
Width	2800 mm	9' 2"	
Height	3400 mm	11' 2"	
Weight	41 tons	90400 lbs	
Noise emissions			
L _{WA} (EN ISO 9614)*	124 dB		
L _{PA} (EN ISO 11202)**	99 dB		
Options			

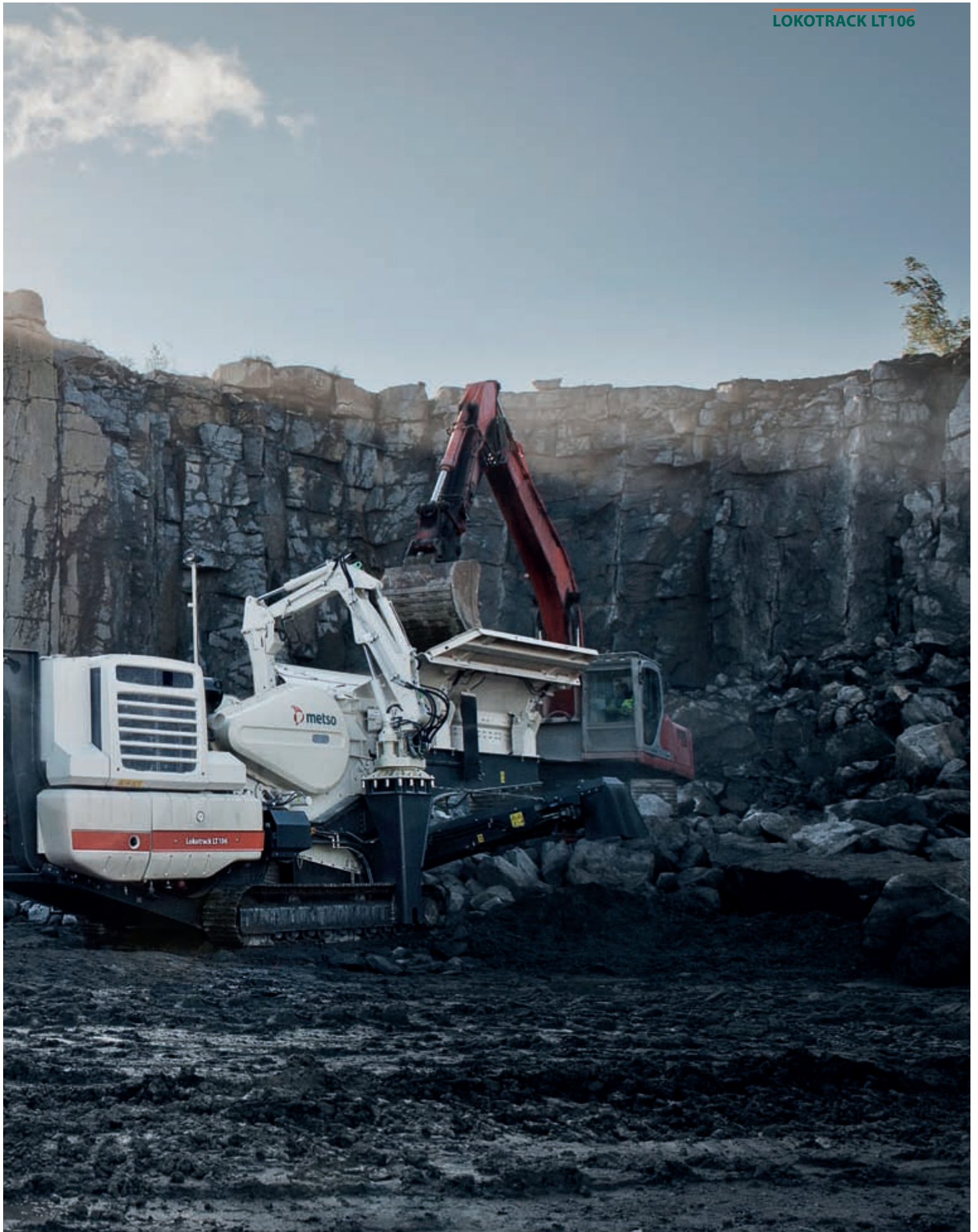
Screen module, long main conveyor, side conveyor, active setting control for crusher (ASC), crusher wear plates for recycling and quarry, hammer and boom, magnetic separator, automatic lubrication unit, radio remote control, conveyor dust covers and discharge hoods, high pressure water spraying system, belt protection plate, additional side plates for hopper, rubber bottom for feeder, hydraulic generator, hydraulic power takeoff, additional service platform, pre-heater for engine, interlocking cable, hot and cold climate kits.

*L_{WA} = A-weighted sound power level

**L_{PA} = A-weighted sound pressure level at the workstation







Metso's Mining and Construction crushing and screening equipment

Product families:

Crushers

- C series jaw crushers
- SUPERIOR® gyratory crushers
- GP series cone crushers
- HP series cone crushers
- MP series cone crushers
- NP series horizontal impact crushers
- Barmac series vertical impact crushers

Screens

- DF series screens
- CVB series screens
- FS series screens
- TS series screens
- MF series screens
- RF series screens

Feeders

- TK series feeders
- VF series feeders
- LH.G series feeders
- VG series feeders
- PF series feeders
- HRBM series feeders

Mobile crushing and screening plants

- Lokotrack LT series track-mounted crushing plants
- Lokotrack ST series track-mounted screening plants
- Lokotrack CT and CW series track- and wheel-mounted conveyors
- Nordberg NW series wheel-mounted crushing and screening plants

Stationary crushing plants

- Complete plants for aggregates production
- Complete plants for recycling applications



All Metso Minerals Oy Tampere Works equipment is produced in accordance with a quality assurance system that complies with the ISO 9001 standard, as certified by Lloyd's Register Quality Assurance Limited.



www.metso.com
minerals.info.csr@metso.com

AUSTRALIA AND NEW ZEALAND

Metso Minerals (Australia) Ltd
1110 Hay Street
West Perth, WA 6005
Australia
Phone: +61 8 9420 5555
Fax: +61 8 9320 2500

CHINA

Metso Minerals (Beijing) Ltd
19/F, The Exchange Beijing, Tower 4
No. 118 Jian Guo Lu Yi Chaoyang District
100022 Beijing
China
Phone: +86 10 6566 6600
Fax: +86 10 6566 2583

EUROPE, MIDDLE EAST AND AFRICA

Metso Minerals España, S.A.
C/ Rivas N° 4
28032 Madrid
Spain
Phone: +34 91 825 5700
Fax: +34 91 825 5740

INDIA AND ASIA-PACIFIC

Metso Minerals (India) Pvt Ltd
1st Floor, DLF Building No. 10,
Tower A, DLF Cybercity
DLF Phase II
Gurgaon 122002
India
Phone: +91 124 235 1541
Fax: +91 124 235 1601

NORTH AND CENTRAL AMERICA

Metso Minerals Industries Inc.
20965 Crossroads Circle
Waukesha, WI 53186
U.S.A.
Phone: +1 262 717 2500
Fax: +1 262 717 2504

RUSSIA AND OTHER CIS COUNTRIES

ZAO Metso Minerals (CIS)
Pulkovskoe shosse, 40/4 "A"
office building "Technopolis"
196158, St. Petersburg
Russia
Phone: +7 812 333 40 00
Fax: +7 812 333 40 01

SOUTH AMERICA

Metso Minerals Indústria e Comércio Ltda
Avenida Independência, 2500 - Éden
18087-050 Sorocaba
Brazil
Phone: +55 15 2102 1300
Fax: +55 15 2102 1696

METSO'S MINING AND CONSTRUCTION

Lokomonkatu 3, P.O.Box 306
FI-33101 Tampere
Finland
Phone: +358 20 484 142
Fax: +358 20 484 143